

# MILROSE

by INTRADE GROUP

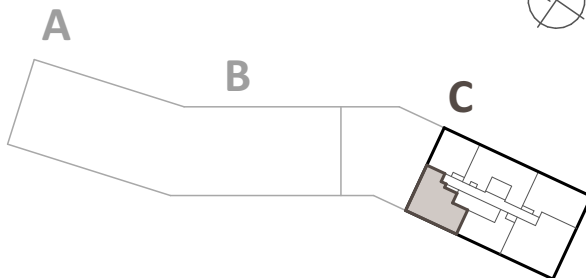
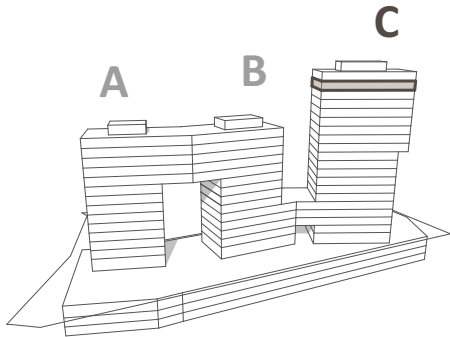
## Interiér

|    |               |                      |
|----|---------------|----------------------|
| 01 | Chodba        | 5,55 m <sup>2</sup>  |
| 02 | Kuchyňa       | 8,12 m <sup>2</sup>  |
| 03 | Obývacia izba | 21,10 m <sup>2</sup> |
| 04 | Chodba        | 4,15 m <sup>2</sup>  |
| 05 | Izba          | 11,78 m <sup>2</sup> |
| 06 | Spálňa        | 15,40 m <sup>2</sup> |
| 07 | Kúpeľňa       | 5,27 m <sup>2</sup>  |
| 08 | WC            | 1,90 m <sup>2</sup>  |
|    |               | 73,28 m <sup>2</sup> |

## Exteriér

|    |        |                      |
|----|--------|----------------------|
| B1 | Balkón | 3,79 m <sup>2</sup>  |
| B2 | Balkón | 5,81 m <sup>2</sup>  |
| B3 | Balkón | 3,92 m <sup>2</sup>  |
|    |        | 13,53 m <sup>2</sup> |

SPOLU 86,80 m<sup>2</sup>

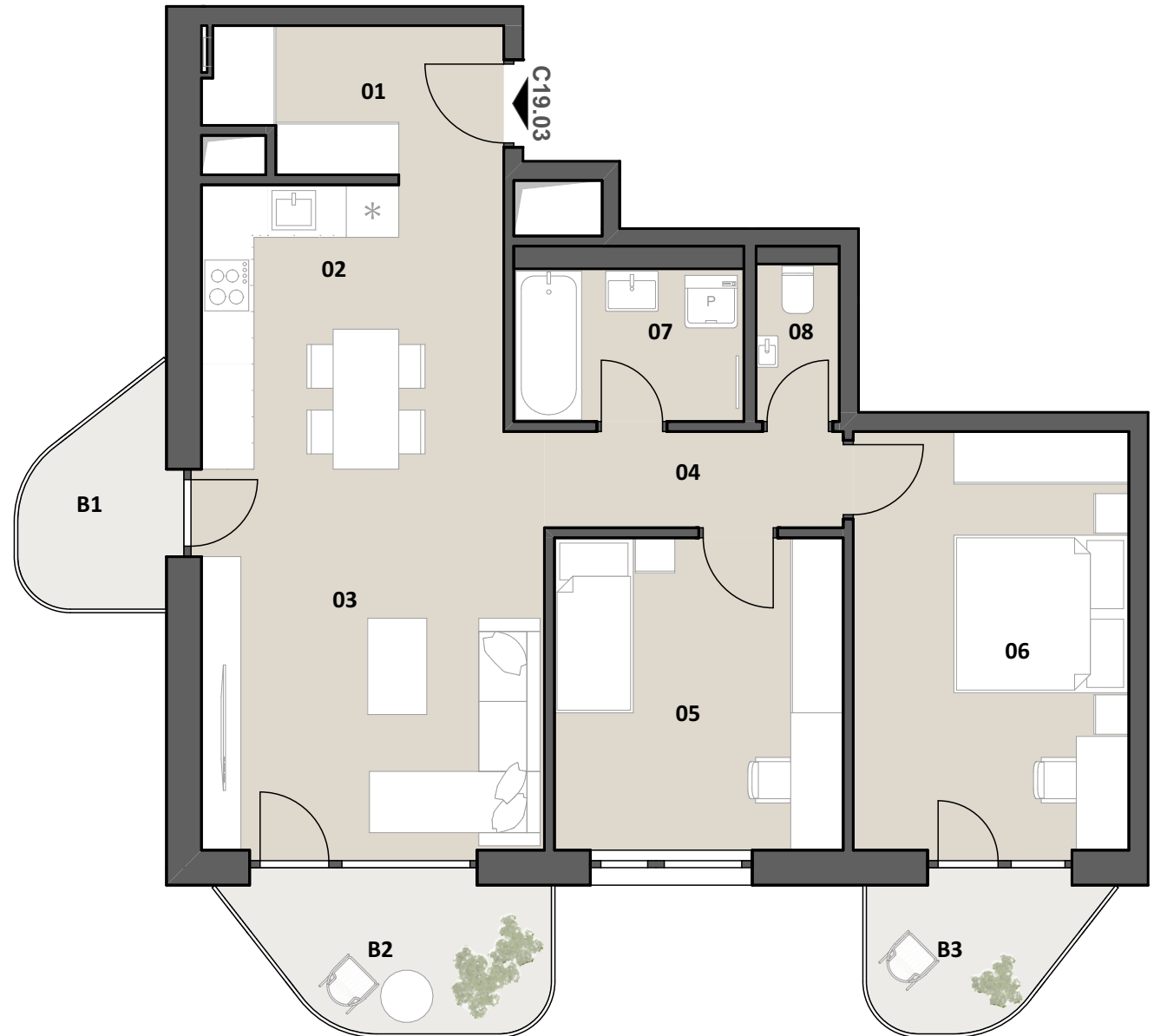


Ozn. bytu  
C19.03

Blok  
C

Podlažie  
19.NP

Počet izieb  
3+kk



Uvedené dispozičné riešenie, rozmery a plochy sú z platnej projektovej dokumentácie a majú orientačný charakter.